

KAKKU SPINDLE TYPE ROTARY GEARED LIMIT SWITCHES

TYPE KRLS – 400

SPECIAL FEATURES

- Double break snap-acting contacts with high quality silver cadmium oxide contact tips having arc-retarding and anti-welding properties.
- Provided with specially treated oil resistant rubber gaskets at all the joints in the switch to make it completely dust-proof.
- Universal design for both AC and DC applications.
- Contact fingers are of high grade phenolic fibrous moulding material having excellent electrical and mechanical properties.
- Resists extreme shock & vibratory conditions.
- Ease of maintenance, reliability of performance, flexible contact sequence and long-life.

APPLICATION

KAKKU Spindle Type Rotary Geared Limit Switches Type KRLS-400 are used in control circuits of cranes, hoists, winches and other drive mechanisms where two way travel of the mechanism is to be limited within certain well defined pre-determined positions. The switch is suitable for coupling directly with the motors, reduction gear shafts, rope drums etc. and are particularly suitable for DC application.

CONSTRUCTIONAL & OPERATIONAL FEATURES

The limit switch has a spindle (drive shaft) with a key for mounting of the coupling. The spindle carries a worm-gear which drives a gear wheel mounted on the operating shaft carrying two numbers of

adjustable operating cams. When the spindle rotates and reaches extreme position. The corresponding cam presses against its contact assembly, opening the contact with snap action. Similarly when the direction of the spindle rotation is reversed, the other cam opens the second set of contacts in the other extreme position.

The switch is fully adjustable as regards to contact opening and closing within 42 revolutions of the spindle in the case of switch having gear ratio 1:50 and within 63 revolutions of the spindle in the case of switch having gear ratio 1: 75. After operation the switch is reset by the spindle turning through maximum 1.5 revolution in the case of switch with gear ratio 1: 50 and 2.25 revolution in the case of switch with 1 : 75 gear ratio.

TECHNICAL DATA

Ambient temperature	: 55°C.
Mounting Arrangement	: Surface mounting.
Housing	: Provided with Cast Iron detachable Cast Aluminium cover
Enclosure category	: As per IP-55 of IS : 2147 – 1962.
Cable entry	: 2 Nos. 25mm conduit threaded entry.
Terminals	: Suitable for conductor size 2.5mm ² .
No. of contacts	: 2
(Electrically separated)	
Gear ratios (standard)	: 1 : 50 or 1 : 75
Eqvt. to	: erst-while USSR type Yb – 250T.
Rated duty	: 600 operation per hour

RATINGS

Rated voltage	Permissible continuous current	Making current upto 500V AC	Breaking current at inductive load (Amps.)			
			DC			AC upto 500V
			110V	220V	440V	
Upto 500V AC	20A	100A	2.5	2.0	0.5	20

OPTIONAL EXTRAS

- Enclosure IP-65.
- Epoxy paint for special applications.
- Suitable base plate at bottom to match any mounting dimension. (furnish drawing).
- Reducer can be provided for cable entry suitable for 19mm conduit entry.

ORDERING INFORMATION

- Give KAKKU type and gear ratio.
- Contact opening and closing sequence for each of the contacts.
- Specify optional extras if any.

Product improvement is a continuous process at KAKKU. Hence data given in this catalogue is subject to revision without notice.



Symbol Of Reliability

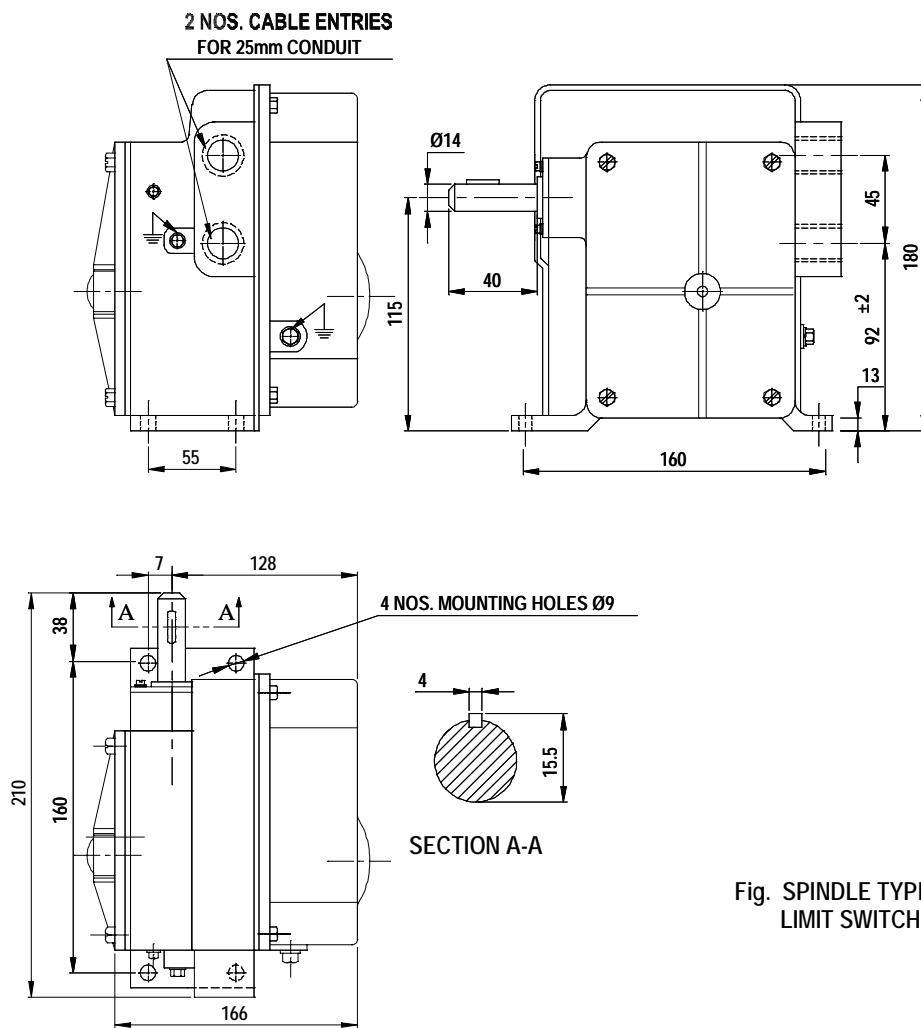


Fig. SPINDLE TYPE ROTARY GEARED
LIMIT SWITCHES