

KAKKU SPINDLE TYPE ROTARY GEARED LIMIT SWITCHES

TYPE KRLS - 430

SPECIAL FEATURES

- Provided with Silver Alloy contact tips suitable for heavy duty operation.
- The contacts operate with wiping action to prevent the deposition of harmful carbon on contact tips. Therefore there is a reduced need for frequent maintenance.
- The contact actuating lever is provided with rollers. The actuating cams strike against these rollers to open or close the contacts. Therefore contact block offers very high wear resistance.

- Contact terminals are easily approachable for convenient wiring.
- The Limit Switches are designed to operate reliably even under vibratory conditions.
- Sturdy construction.

TECHNICAL DATA

Ambient temperature	: Upto 55°C.
Rated operational voltage	: 500V AC or 440V DC
Rated operational current	: 16A (continuous)
Degree of protection	: IP - 54 (or better)
Gear ratios	: 1 : 50 or 1 : 75

RUPTURING CAPACITY

Voltage 'V'	AC		DC
	Non-inductive Circuits	Inductive Circuits Cos ϕ \geq 0.4	Inductive Circuits L/R \leq 0.1
110	50A	-	0.40A
220	40A	5.0A	0.30A
440	-	1.2A	0.10A

SELECTION CHART

Type	No. of contacts	Gear ratio
KRLS - 431 - 01	2	1 : 50
KRLS - 431 - 02	2	1 : 75
KRLS - 432 - 01	4	1 : 50
KRLS - 432 - 02	4	1 : 75

TYPE KRLS - 430
Dimensions (mm)

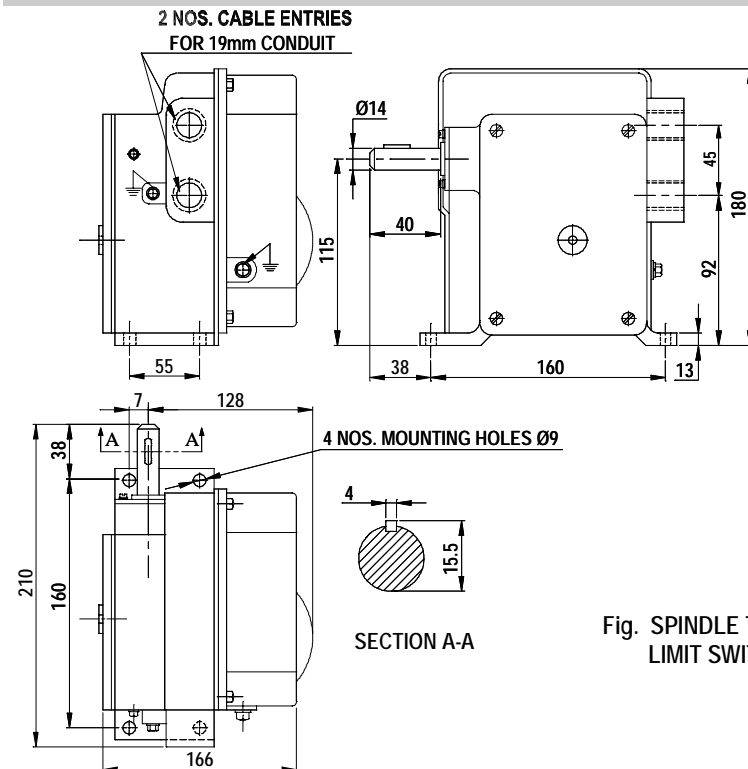


Fig. SPINDLE TYPE ROTARY GEARED
LIMIT SWITCH

Product improvement is a continuous process at KAKKU. Hence data given in this catalogue is subject to revision without notice.

Electronic & Power Control Co.

(AN ENTERPRISE OF KAKKU E & P CONTROL (P) LTD.)

1, Industrial Estate, Bhilai 490 026,
(Chhattisgarh) INDIA.



Symbol Of Reliability

Tel : 91-788-2382610, 2382297

Fax : 91-788-2381797, 2321836

E-mail : kakku_bhilai@yahoo.com