

KAKKU HEAVY DUTY PULL CORD SWITCHES

SERIES KCC

SPECIAL FEATURES

- Double break contacts with high quality Silver Alloy contact tips.
- Provided with specially treated oil resistant rubber gaskets at all the joints in the switch to make it completely dust proof.
- Splash proof design and can be installed in open or exposed to heavy rain without any special protection.
- Equipped with positive safety lock making it a true "safety" switch.
- Resists extreme shock and vibratory conditions.
- Ease of maintenance, reliability of performance, ensuring longer life.

APPLICATION

KAKKU Heavy Duty Pull Cord switches series KCC are designed for emergency stopping of belt conveyors by pulling PVC covered flexible steel wire rope attached to the lever in either direction. The switches are mounted at intervals on both sides of the conveyor belt.

CONSTRUCTION

The switch has a robust Cast Iron/ Al. body housed into which is a contact unit and a steel shaft carrying the contact actuating arm. The contact unit has spring loaded double break contacts. The operating lever is fitted on the operating shaft. The switch can be operated by pulling the cord from either direction. When the rope is pulled, the operating lever gets locked after actuating the contacts. The resetting is possible only by pulling the resetting knob and not merely by pulling the rope in the other direction. This ensures protection against unwanted resetting of the switch and offers complete safety. The switch can be provided with the flag/ lamp to indicate its actuation. This may however not be necessary because the operating position can be easily identified just by looking at the operating lever which is in the vertical position (90° normally with respect to base to base and tilts at about 30° when operated).

TECHINCAL DATA

Ambient Temperature	:	60°C.
Mounting Arrangement	:	Surface mounting
Housing	:	Cast Iron/ Cast Aluminium housing and detachable cover.
Action	:	Self locking at end position
Resetting	:	Manual reset by pulling the resetting knob.
Enclosure category	:	As per IP-55 of IS : 2147 – 1962
Terminals	:	Suitable for conductor size 2.5mm ²
Rating		
1. Rated Voltage	:	Upto 500V AC
2. Continuous rated current	:	10 Amps.

SELECTION CHART

Switch Type	Contact	Other Features
KCC – 110	1NO + 1NC	Without separate terminal box.
KCC – 120	2NO + 2NC	- Do -
KCC – 111	1NO + 1NC	With built in Terminal box having separate cover.
KCC – 121	2NO + 2NC	- Do -

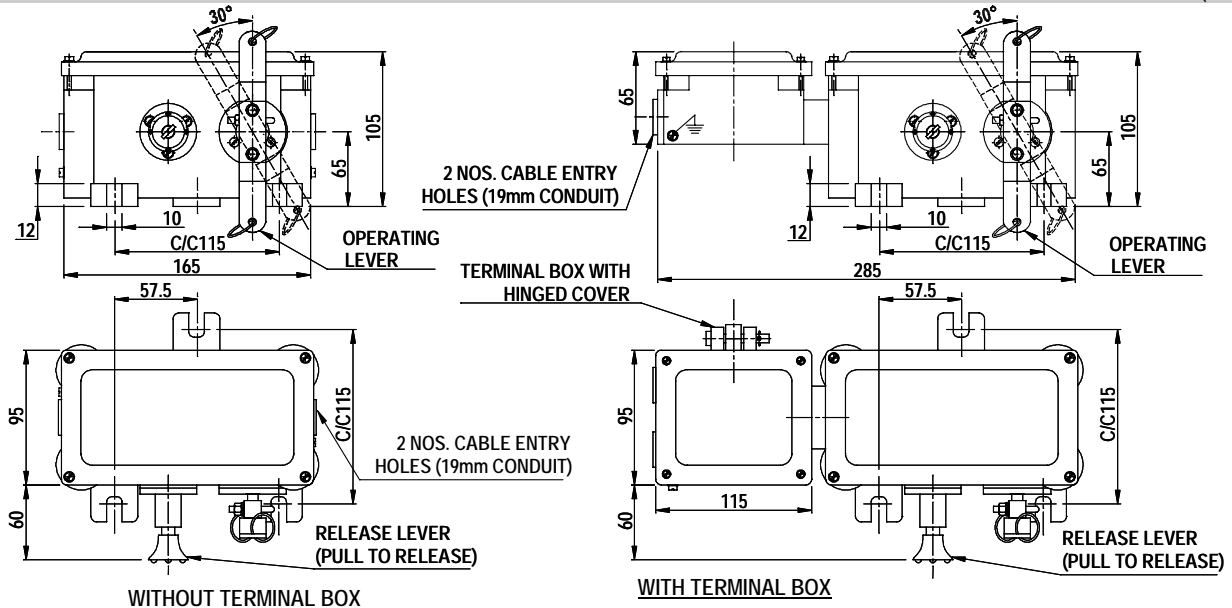
OPTIONAL EXTRAS

- Better enclosure category.
- Epoxy paint for special applications.
- Single or double compression cable glands.
- Suitable base plate at bottom to match any mounting dimensions (furnish drawing)
- P.V.C. Covered Pull Cord galvanized steel rope, 7 X 7 construction, overall dia of Pull Cord rope 4 – 5 mm

ORDERING INFORMATION

- Give KAKKU type
- Specify optional extras if any.

SERIES KCC
Dimensions (mm)



Product improvement is a continuous process at KAKKU. Hence data given in this catalogue is subject to revision without notice.

Electronic & Power Control Co.

(AN ENTERPRISE OF KAKKU E & P CONTROL (P) LTD.)

1, Industrial Estate, Bhilai 490 026,
(Chhattisgarh) INDIA.



Symbol Of Reliability

Tel : 91-788-2382610, 2382297

Fax : 91-788-2381797, 2321836

E-mail : kakku_bhilai@yahoo.com