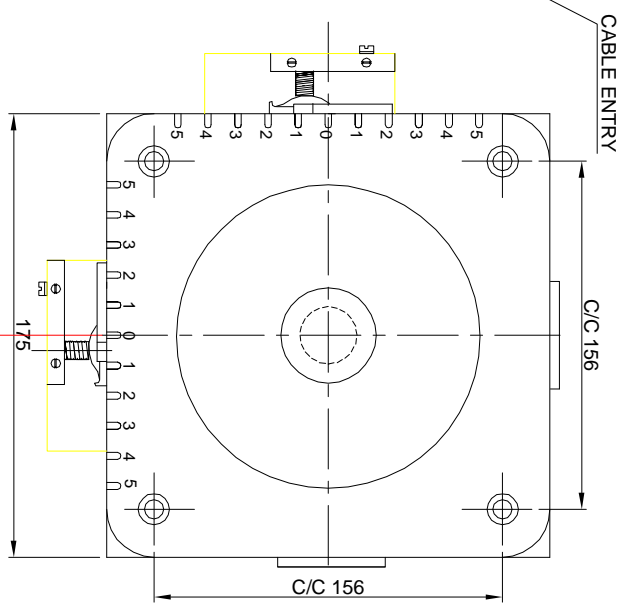
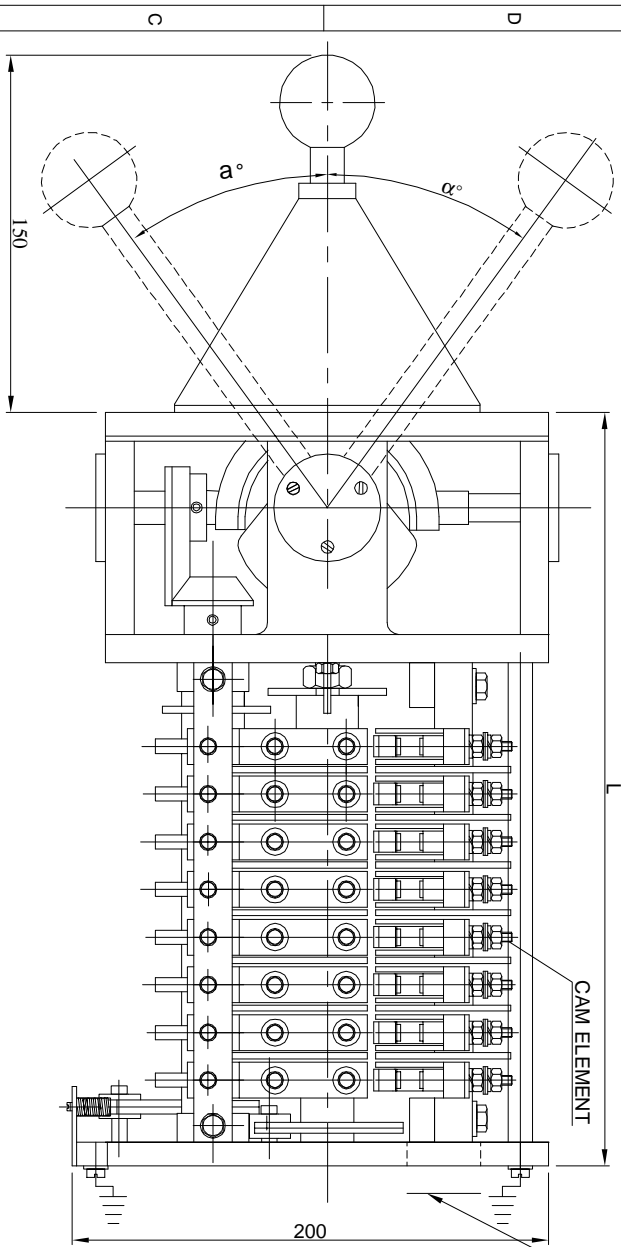


(DEPTH FROM MOUNTING FACE)



All dimensions are in mm.

**TECHNICAL DATA**

- Ambient Temperature : 55°C
  - Mounting Arrangement : Suitable for mounting on control desk / Panel.
  - Terminals : Suitable for conductor size 2.5mm<sup>2</sup>.
  - Operation : Stayput.
  - Operating Positions. : 5-0-5 max (optional)
- RATING**
- Rated Voltage AC : Up to 500V
  - Continuous Current : 10A
  - Making Current : 50A

**Notes :**

1. The master controllers are provided with Double Break contacts.
2. The length "L" of the master controllers depends on the no. of contacts & Possibility of using one cam for two contacts, depending on the contact sequence of the controller. Hence the dimension L mentioned in the table below is max. & Indicative only.
3.  $\infty^\circ = 40$  degrees for 5-0-5 position. The angular deflection between 0 to 1 position is 12 degrees and for each subsequent position, 7 degrees.

TYPE	NO. OF CONTACTS USED IN EACH DIRECTION	DIMENSION L(mm) (Max.)
MSC-5800DX8	8	308
MSC-5800DX10	10	349
MSC-5800DX12	12	408



ELECTRONIC & POWER CONTROL CO.  
 BHLAI-490026  
 GENERAL ARRANGEMENT DRAWING  
 FOR DUAL JOYSTIC CONTROLLERS  
 FOR PANEL MOUNTING  
 TYPE MSC-5800D

Desn	NAME	SIGN	DRG.NO.EPCC/ MSC-5800D/01/02
Drm	PRANAV		TOTAL NO. OF SHEETS
Chd	M.BAHADUR		Scale: N.T.S.
Apd	N.BAHADUR		Sheet: of
Date	21-11-2008		

R.NO.	REV.	SIGN & DATE